

CARTES n° 20

L'Opération Locale Agri-Environnementale Val de Saône

(CA 70, 2002)








13 planches – 1/25 000ème

Sources	Date	Origine, précision, limites d'utilisation...
Chambre d'Agriculture 70	2000	« Bilan de l'opération locale en Val de Saône » (Sylvain BRESSON). Carte 1/25 000 ^{ème} sur fond IGN réalisée à partir des données cadastrales et des dossiers de contractualisation.

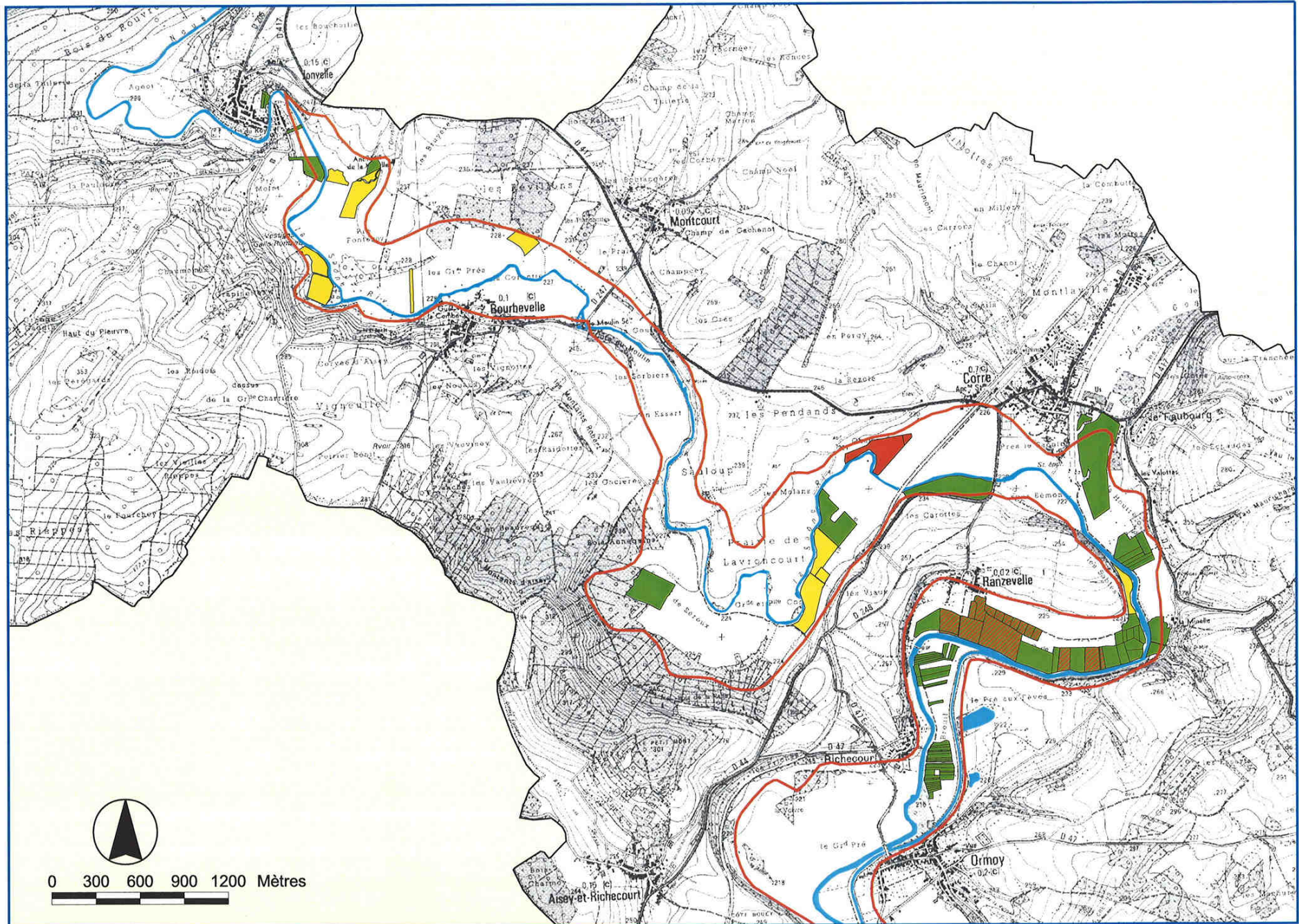
OPERATION LOCALE AGRI-ENVIRONNEMENTALE VAL DE SAÔNE

 Site Natura 2000 "Vallée de la Saône"

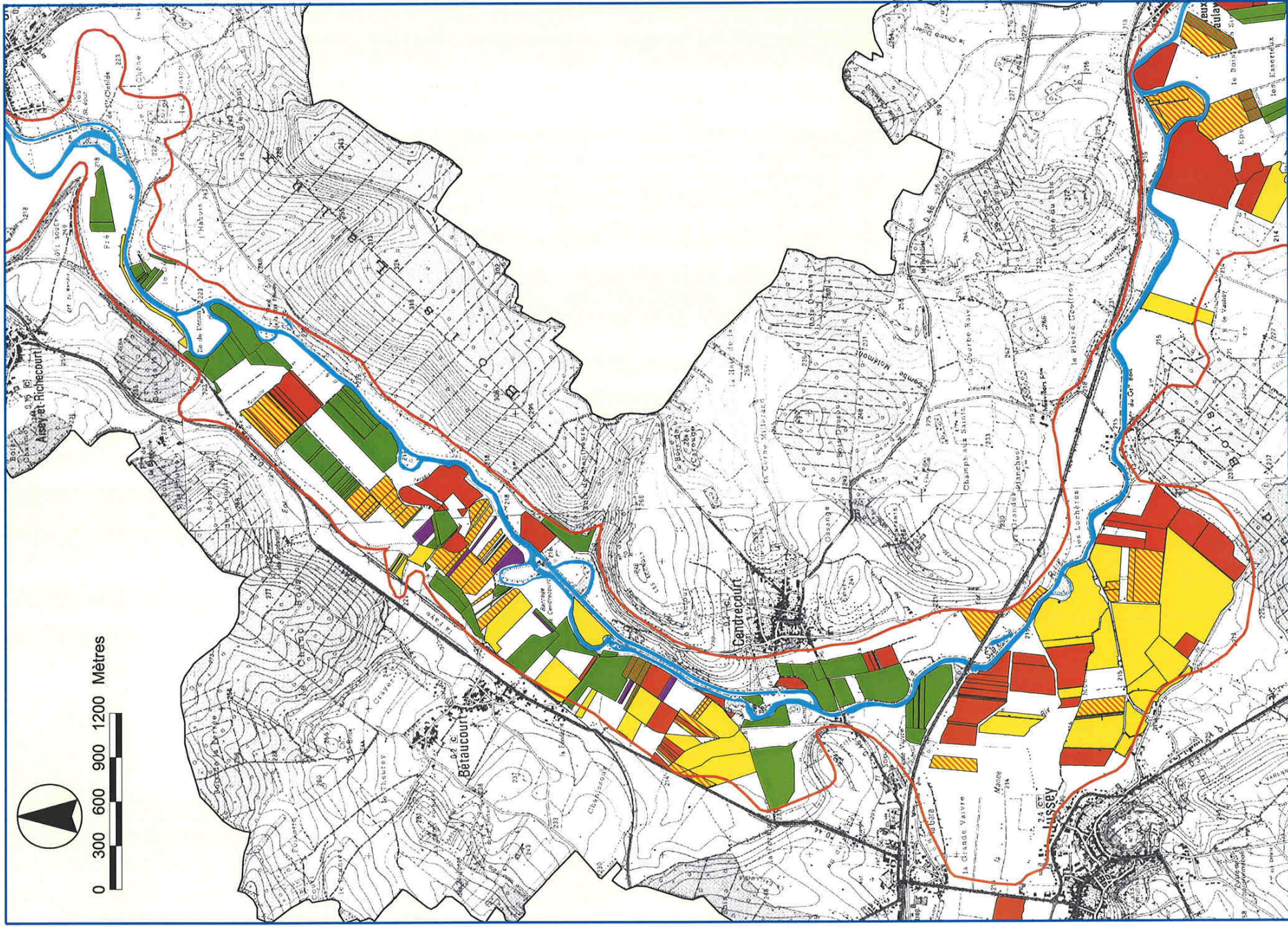
Parcelles contractualisées MAE Types de mesures retenues

-  M1 : Contrat de base
-  M1 + Fc : Contrat de base + fauche centrifuge
-  M2 : Contrat de base + arrêt de fertilisation
-  M2 + Fc : Arrêt de fertilisation + fauche centrifuge
-  M31 : Fauche retardée au 01/07
-  M32 : Fauche retardée au 15/07
-  Zr : Zone de refuge

Zone 1 : Jonvelle - Ormoy



Zone 2 : Aisey - Montreux

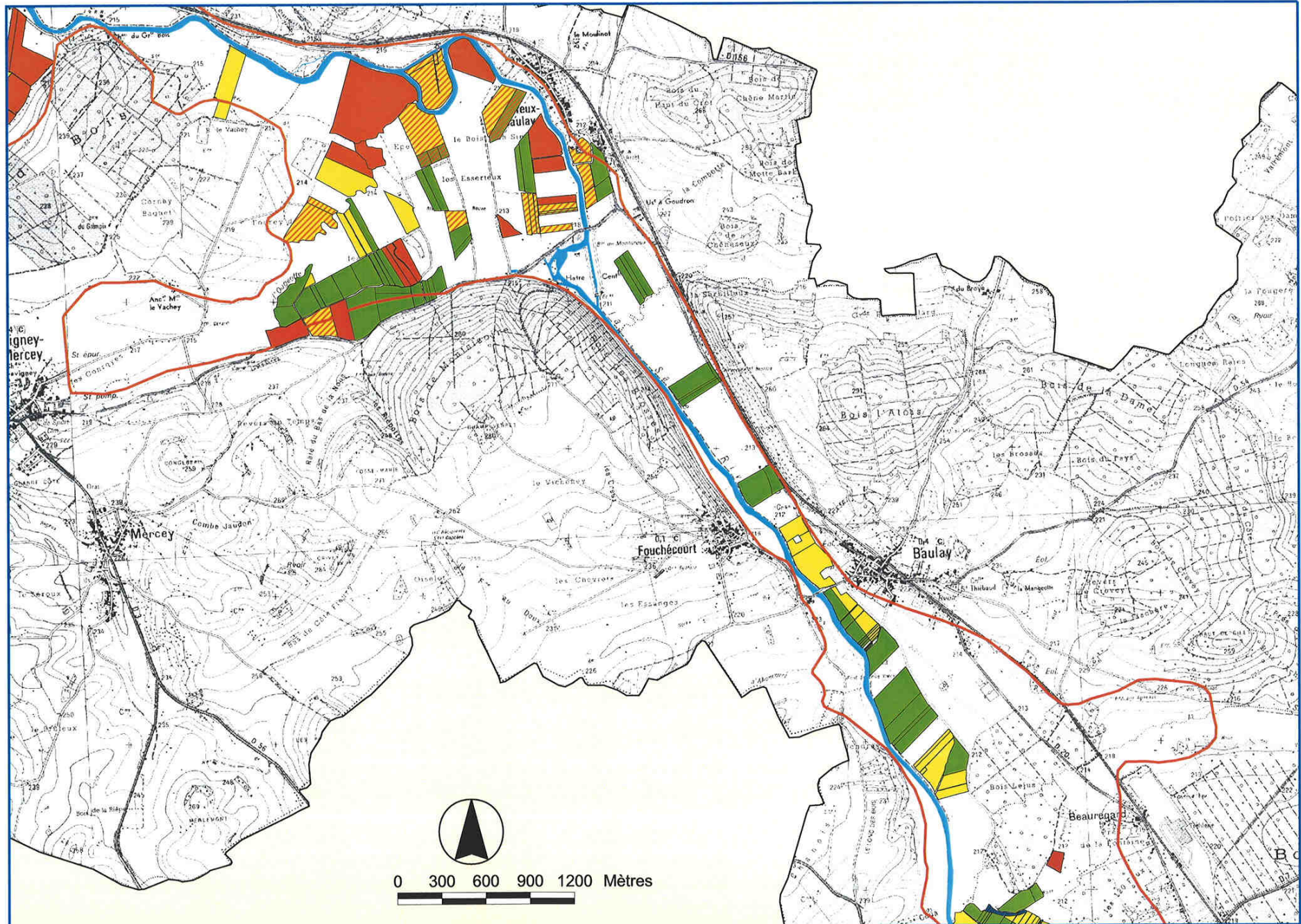


Sources : Chambre d'Agriculture 70

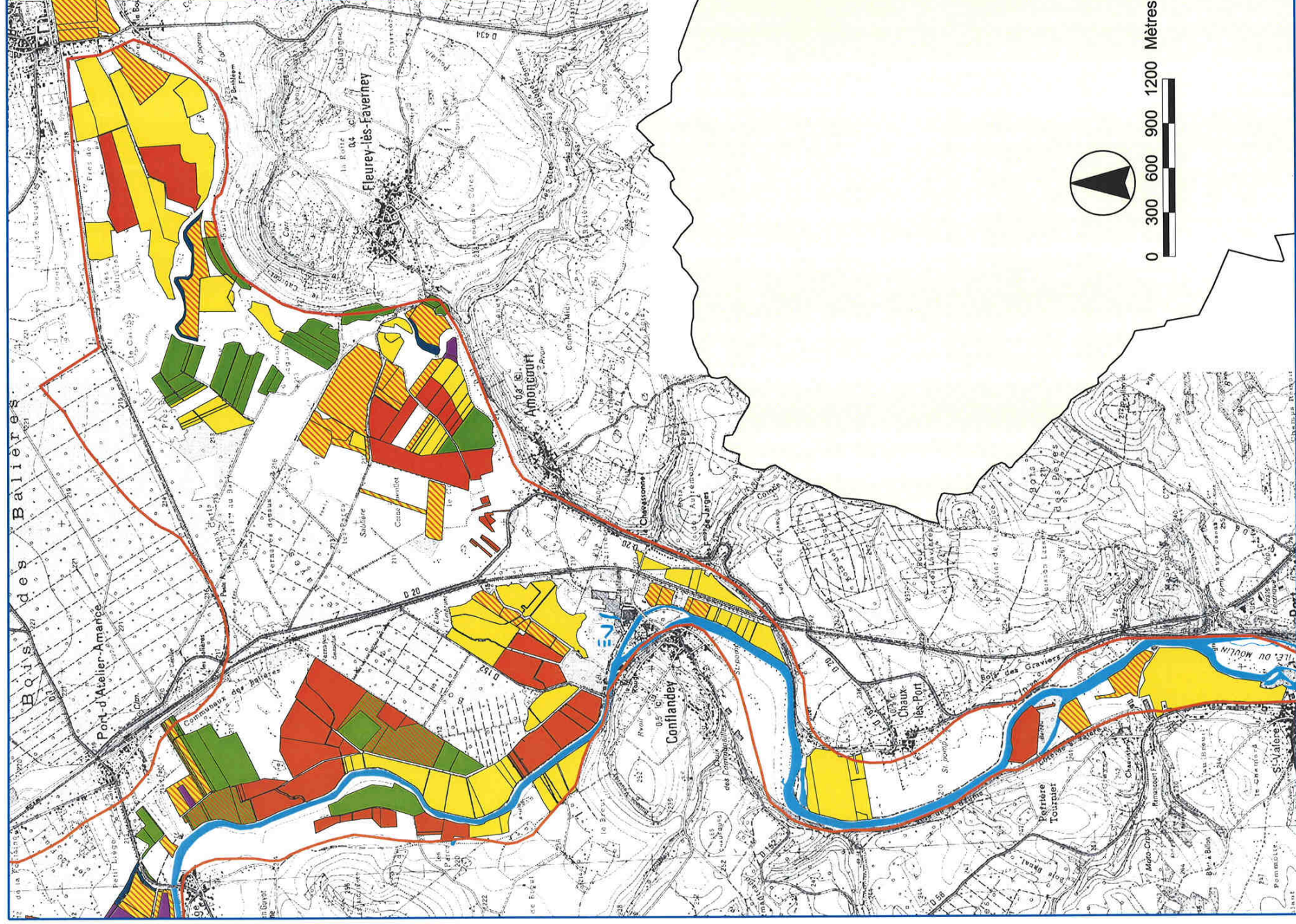


BO CARTON & SCAN 256
©IGN 2009-2007

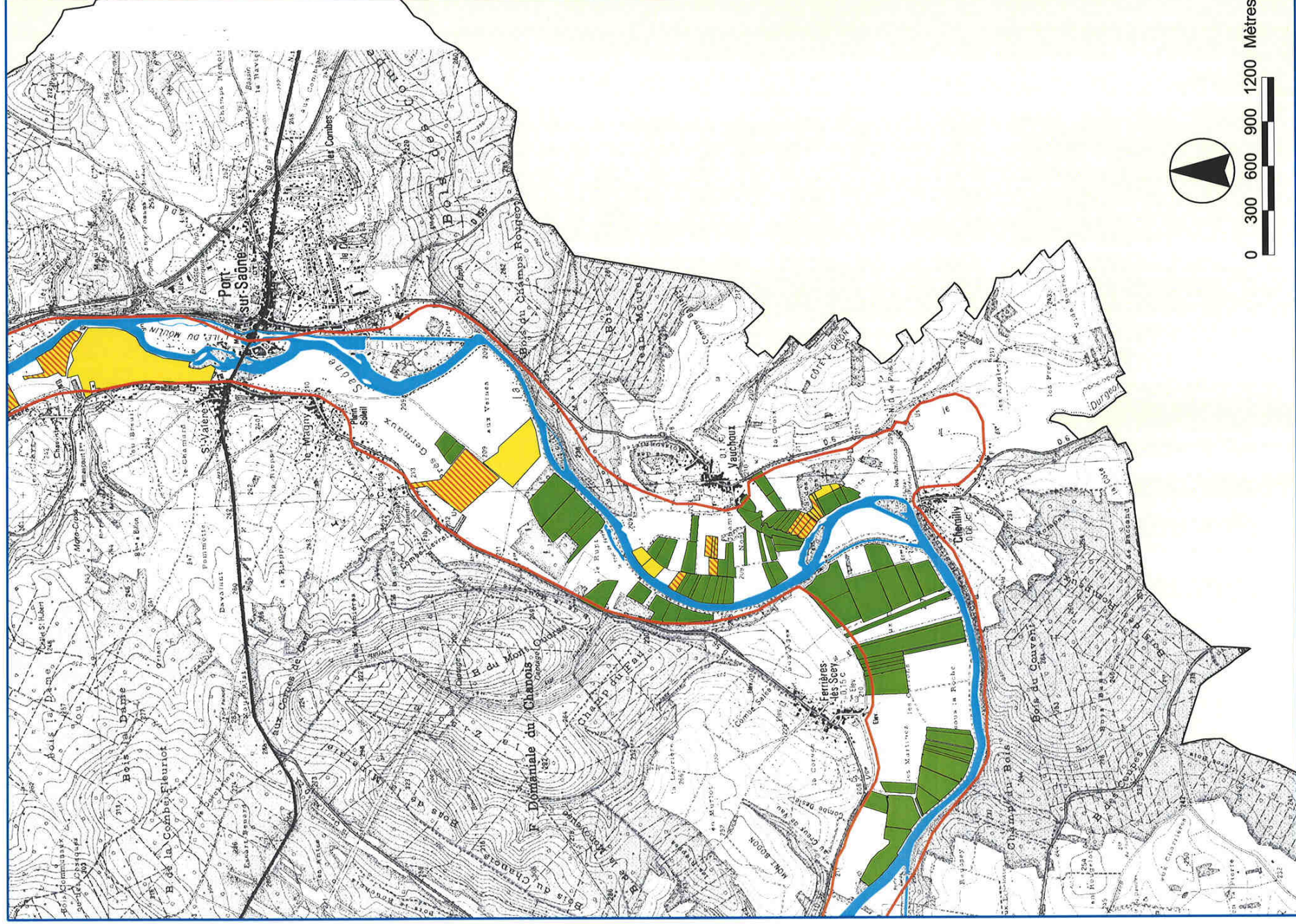
Zone 3 : Fouchecourt



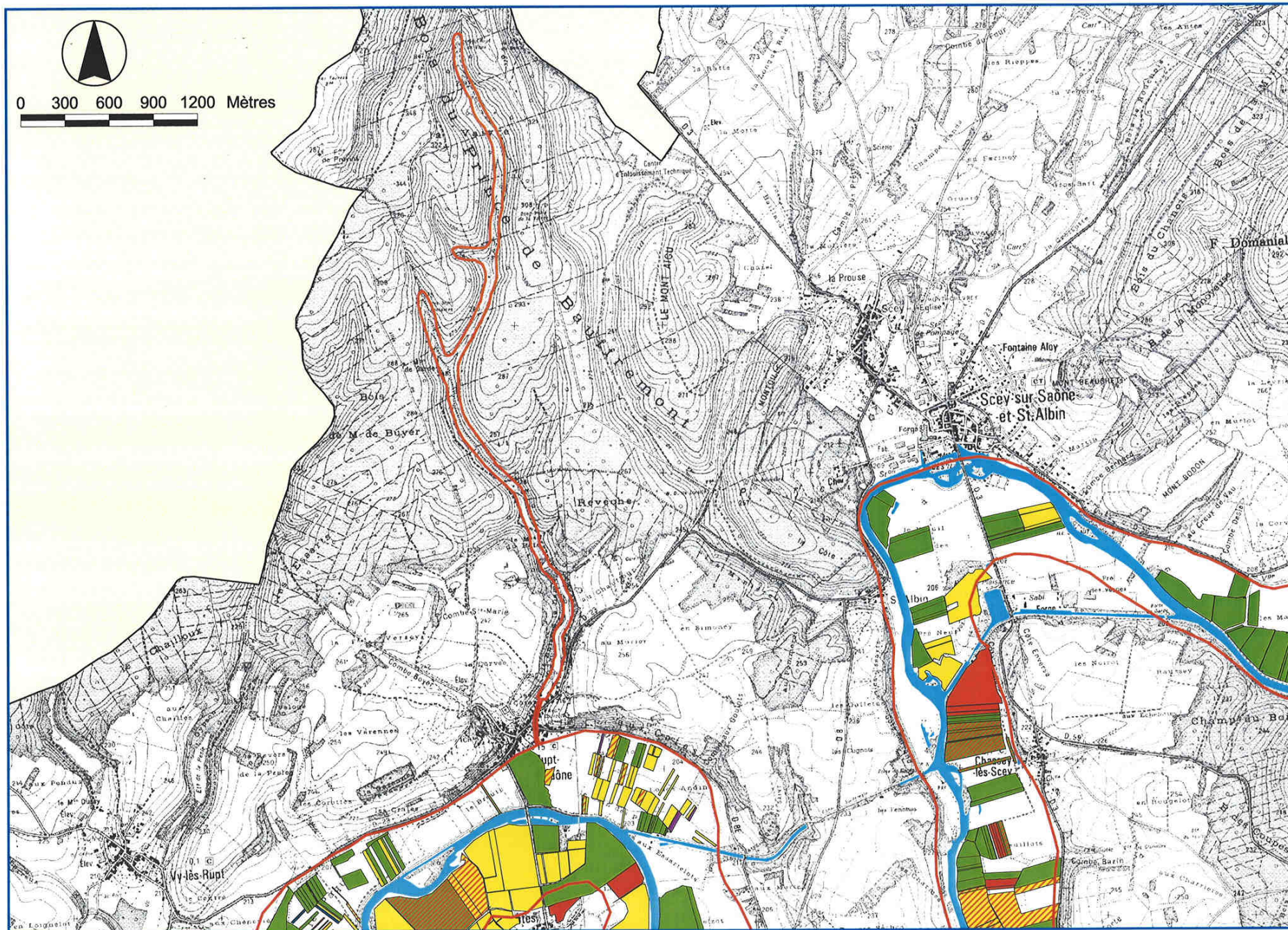
Zone 4 : Port d'Atelier - Port sur Saône



Zone 5 : Port sur Saône



Zone 6 : Scey - Rupt

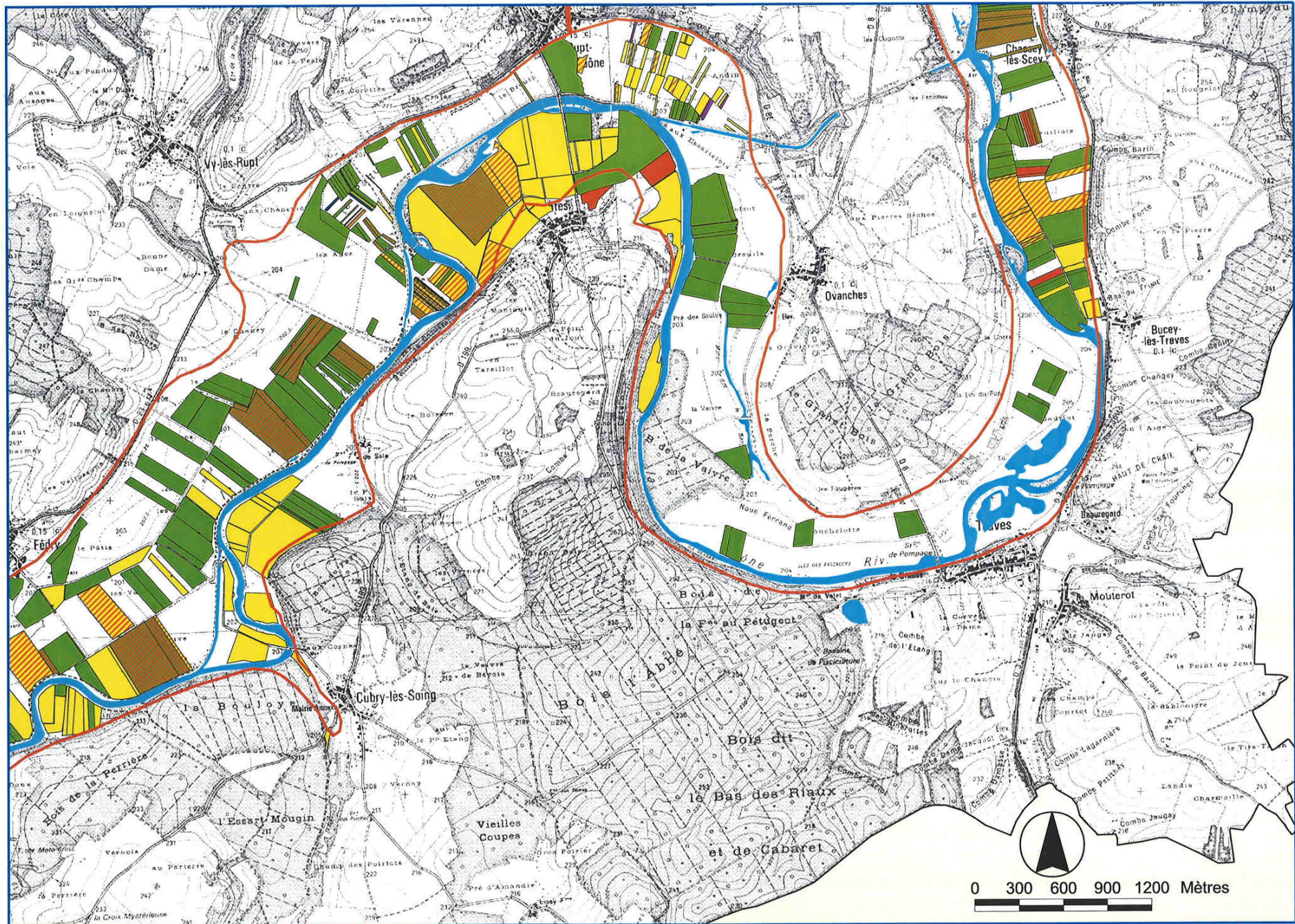


Sources : Chambre d'Agriculture 70



BD CARTO® & SCAN 250
©IGN 2000-2001

Zone 7 : Chassey - Fédry

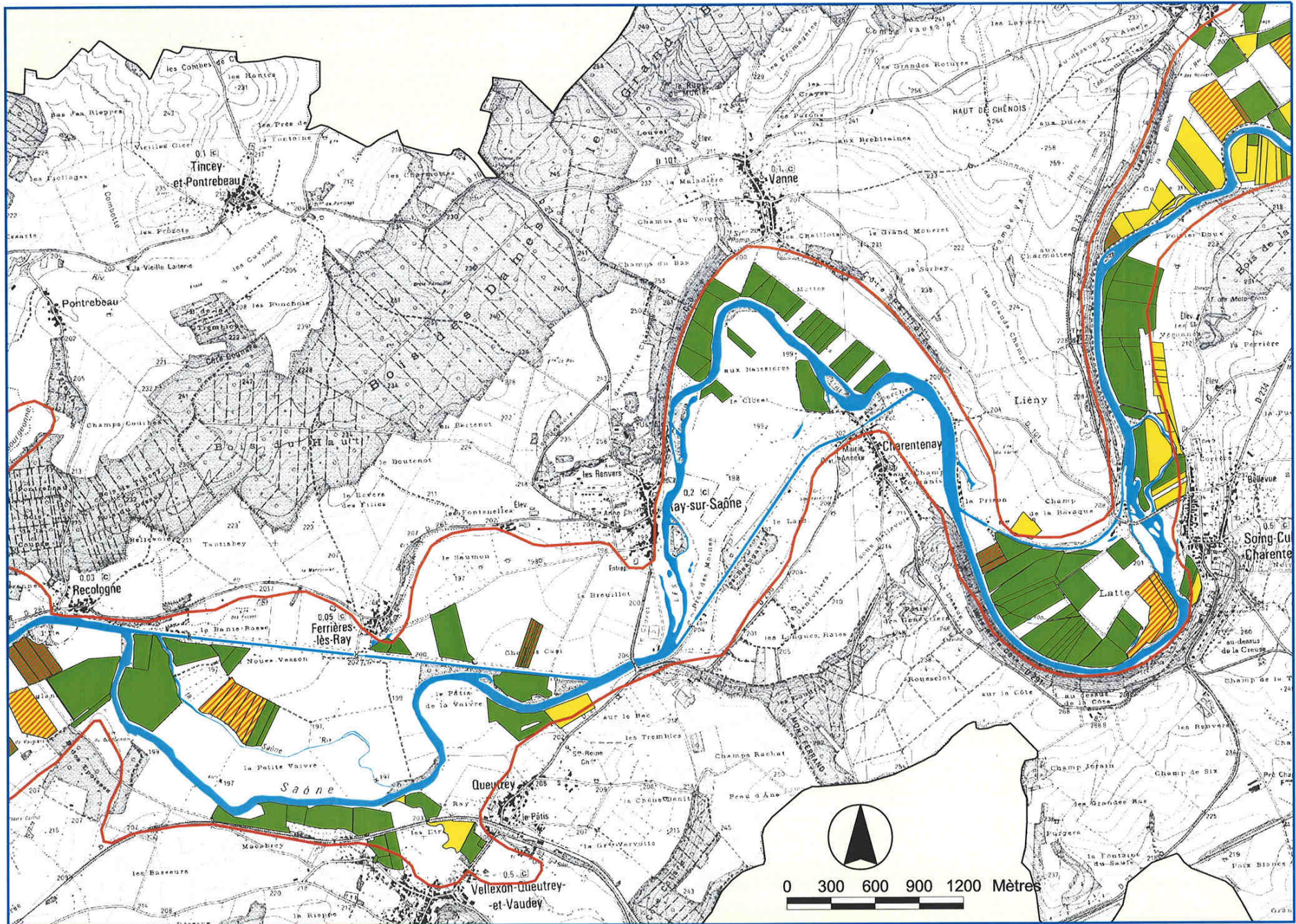


Sources : Chambre d'Agriculture 70



BD CARTO® & SCAN 250
©IGN 2000-2001

Zone 8 : Vannes - Velleuxon

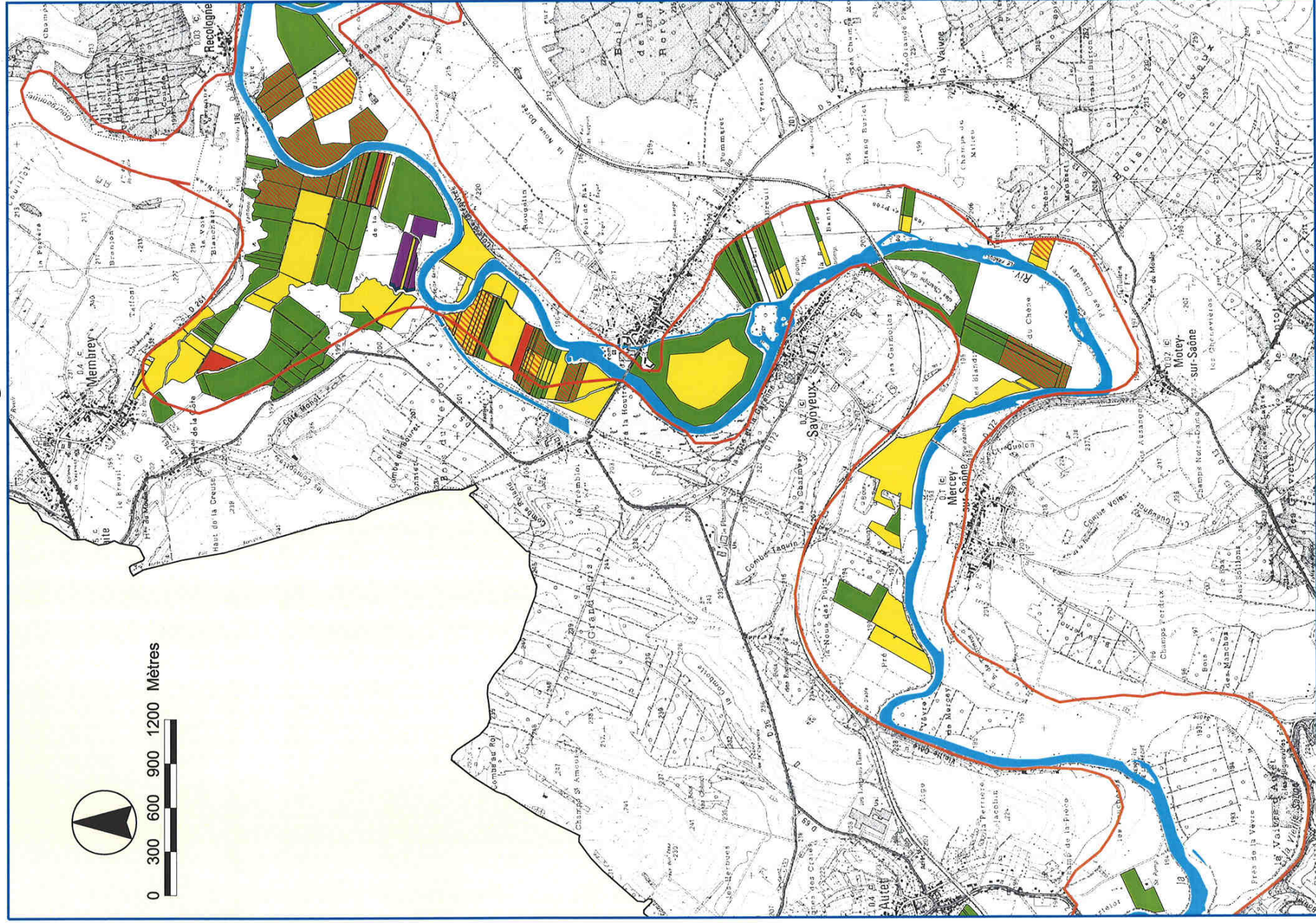


Sources : Chambre d'Agriculture 70

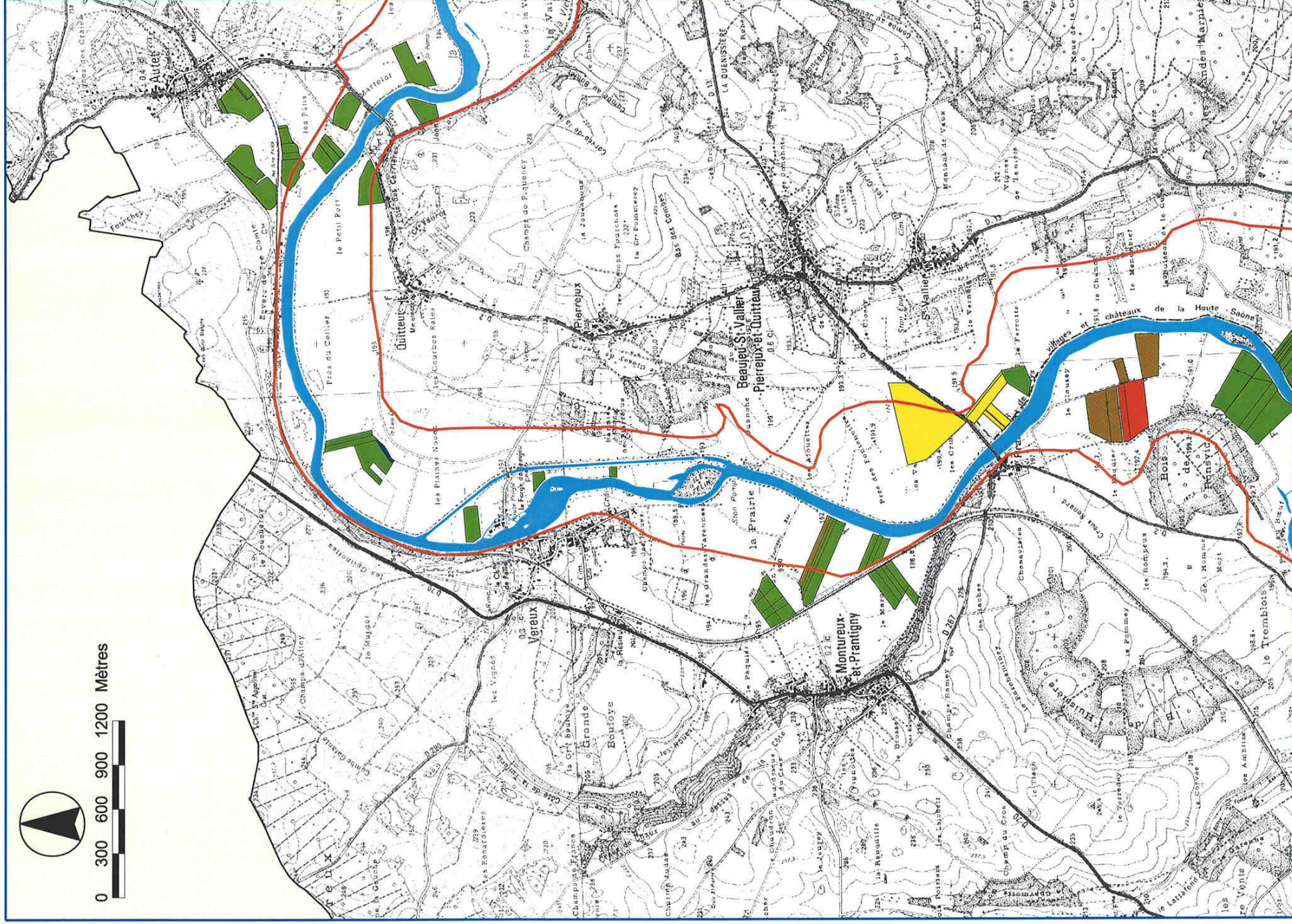


BD CARTO® & SCAN 250
©IGN 2000-2001

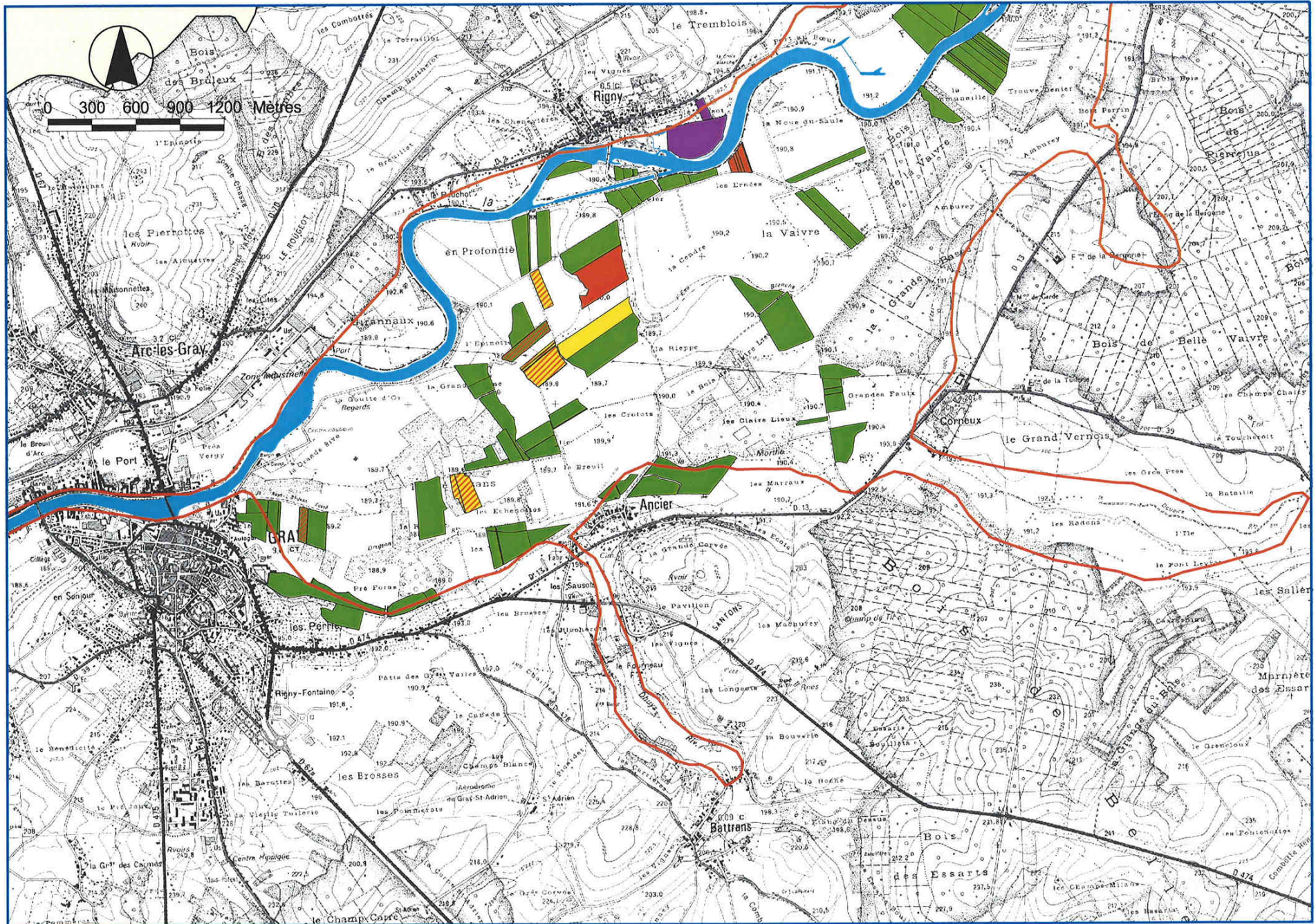
Zone 9 : Membrey - Autet



Zone 10 : Autet - Beaujeu



Zone 11 : Gray nord

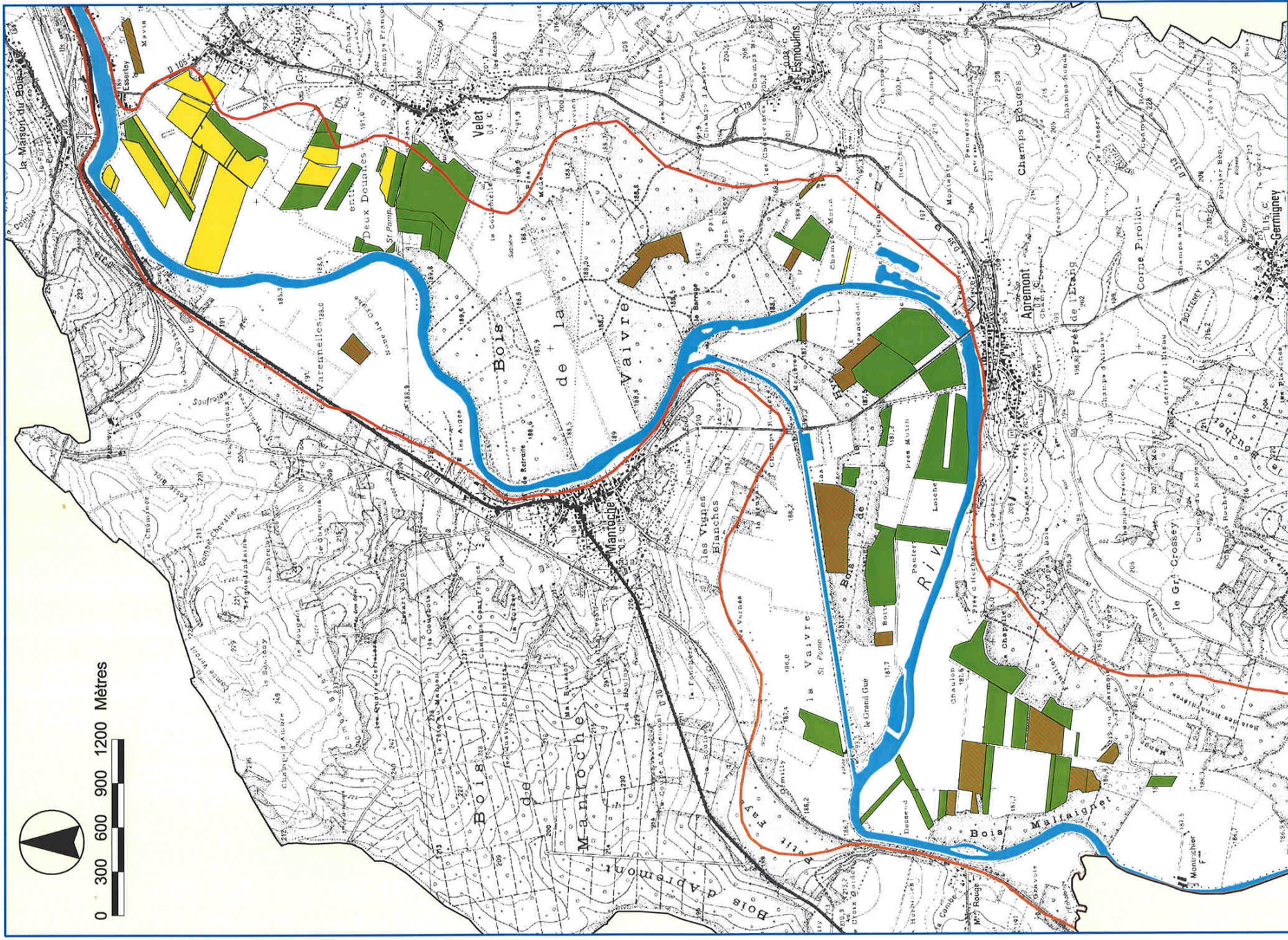


Sources : Chambre d'Agriculture 70



BD CARTO® & SCAN 250
©IGN 2000-2001

Zone 12 : Gray sud



Zone 13 : Broye

