

CARTES n° 21

Carte des habitats naturels recensés sur le site

(ONF 70, ENC, SMSD, 2002)




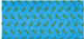






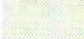










13 planches – 1/25 000ème

| Sources | Date | Origine, précision, limites d'utilisation... |
|----------------|-------------|--|
| Orthophoto IGN | 1998 | Photographies aériennes géoréférencées sur SIG. Précision maximum de 50 cm. Permettent de déterminer l'occupation du sol. |
| ONF | 2001 - 2002 | Visite de l'ensemble du secteur d'étude, pour vérifier l'intérêt des habitats. |
| ONF ENC | 2001-2002 | Bibliographie |

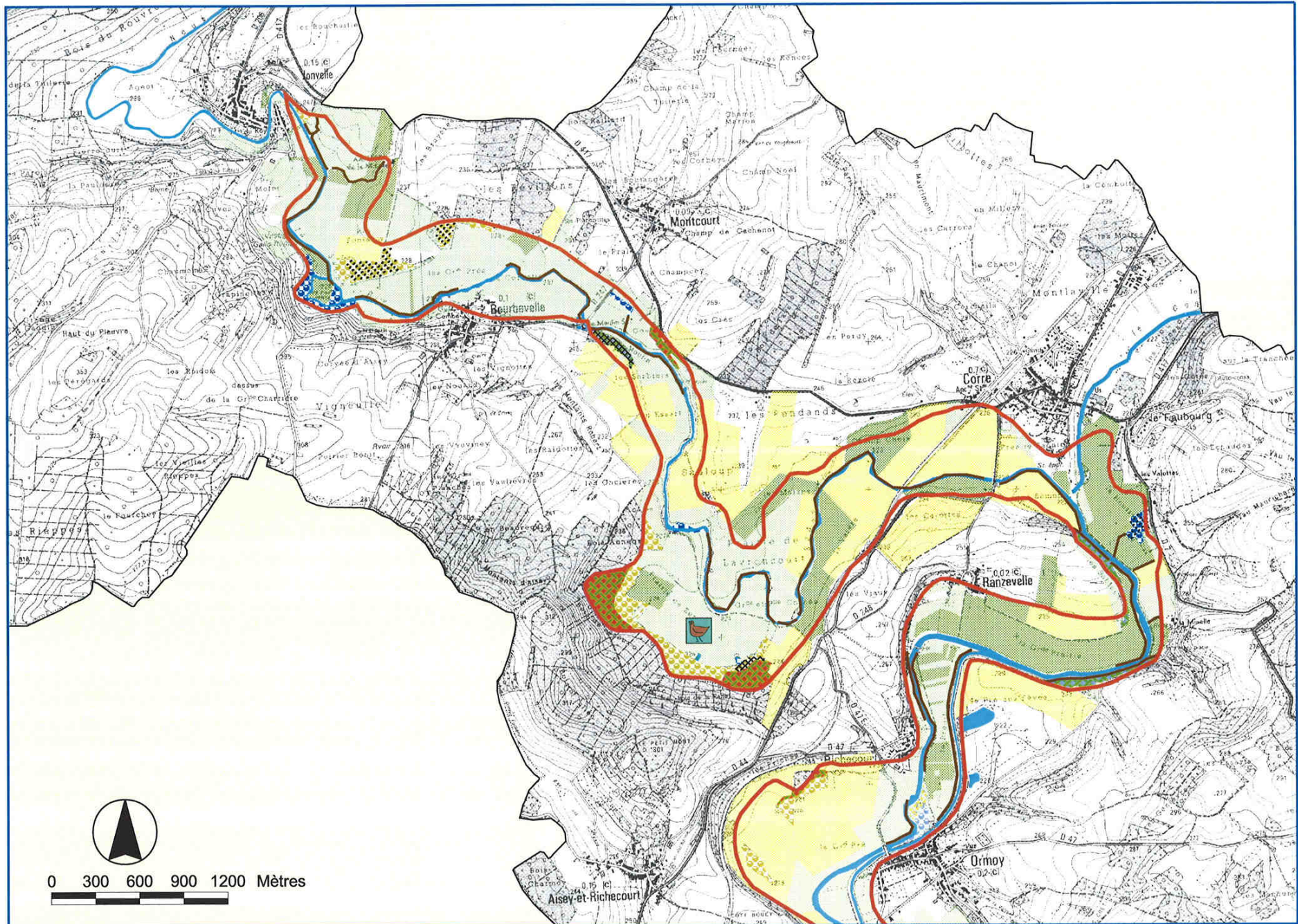
HABITATS NATURELS RECENSES SUR LE SITE

 Site Natura 2000 "Vallée de la Saône"

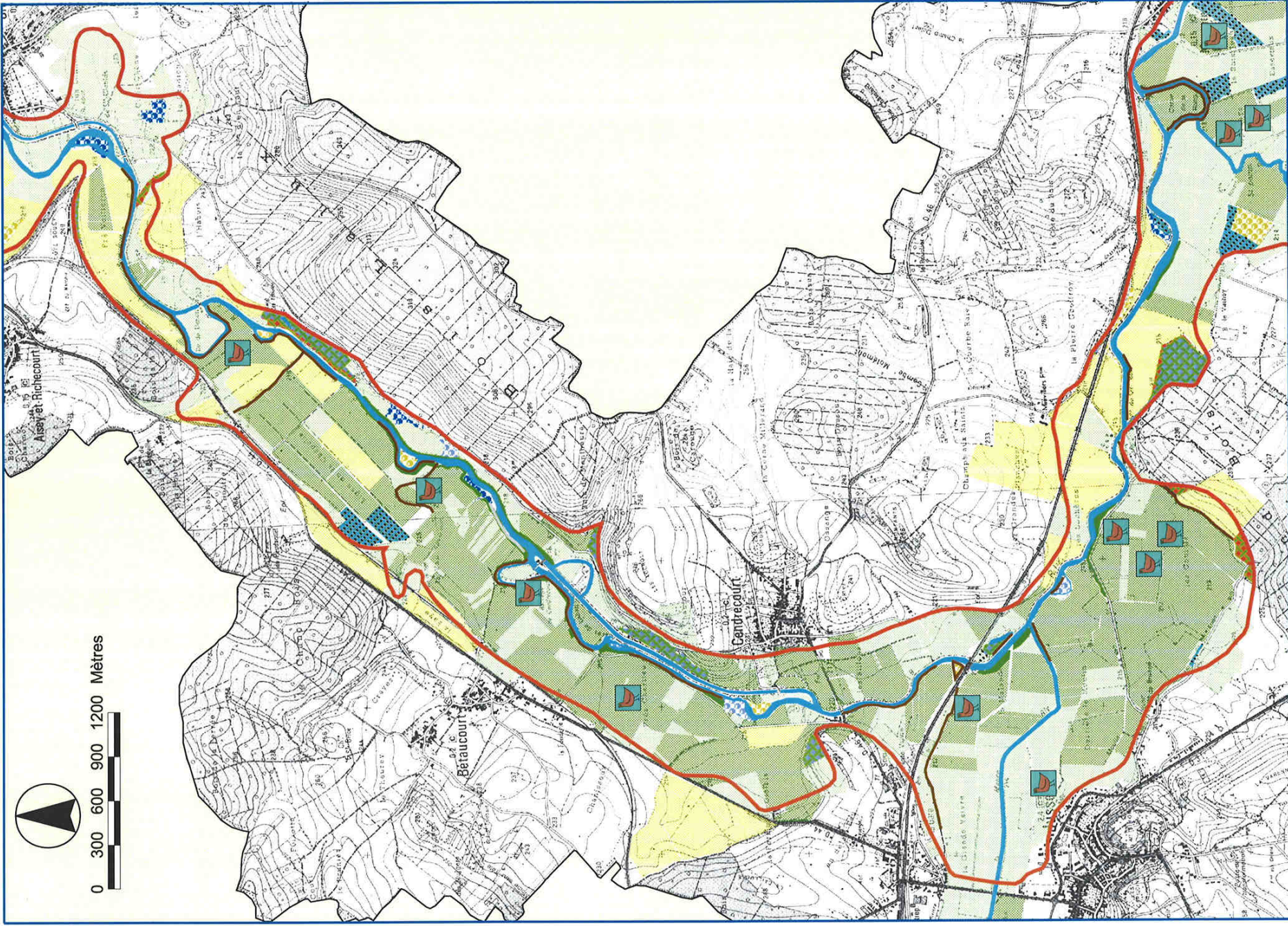
Habitats (code Corine Biotope / code Natura 2000)

- | | | | |
|---|---|---|---|
|  | Hêtraies Chênaies continentales (41.13 / 9130) |  | Plans d'eau à Lentilles et Hydrocharis (22.41 / 3150-3) |
|  | Chênaies pédonculées calcicole à acidophile à Primevères (41.24 / 9160) |  | Mégaphorbiaies (37.1 - 37.7 - 37.715) |
|  | Erablaies Tillaies à Scolopendres (41.4 / 9180) |  | Prairies de bourrelet irrégulièrement inondées (38.22 / 6510) |
|  | Vieilles chênaies acidiphiles des plaines sablonneuses (41.51 / 9190) |  | Prairies permanentes  Biotope favorable aux Râle des Genets / Courlis Cendré |
|  | Saulaies arborescentes à Saules blancs ou Saules cassants (44.13 / 91E0) |  | Prairies temporaires |
|  | Aulnaies Frênaies des petits ruisseaux à laïches pendantes (44.31 / 91E0) |  | Cultures |
|  | Aulnaies Frênaies des sols engorgés (44.332 / 91E0) |  | Peupleraie cultivée |
|  | Forêts inondables à Chênes, Ormes et Frênes (44.4 / 91F0) |  | Peupleraie extensive |
|  | Parcelles boisées de parcs et friches (85.11 - 87) |  | Résineux (douglas, épicéa) |
|  | Lignes de boisement (41.13 - 44.13 - 44.332 - 44.4) | | |
|  | Autres boisements linéaires (85.11 - 87) | | |

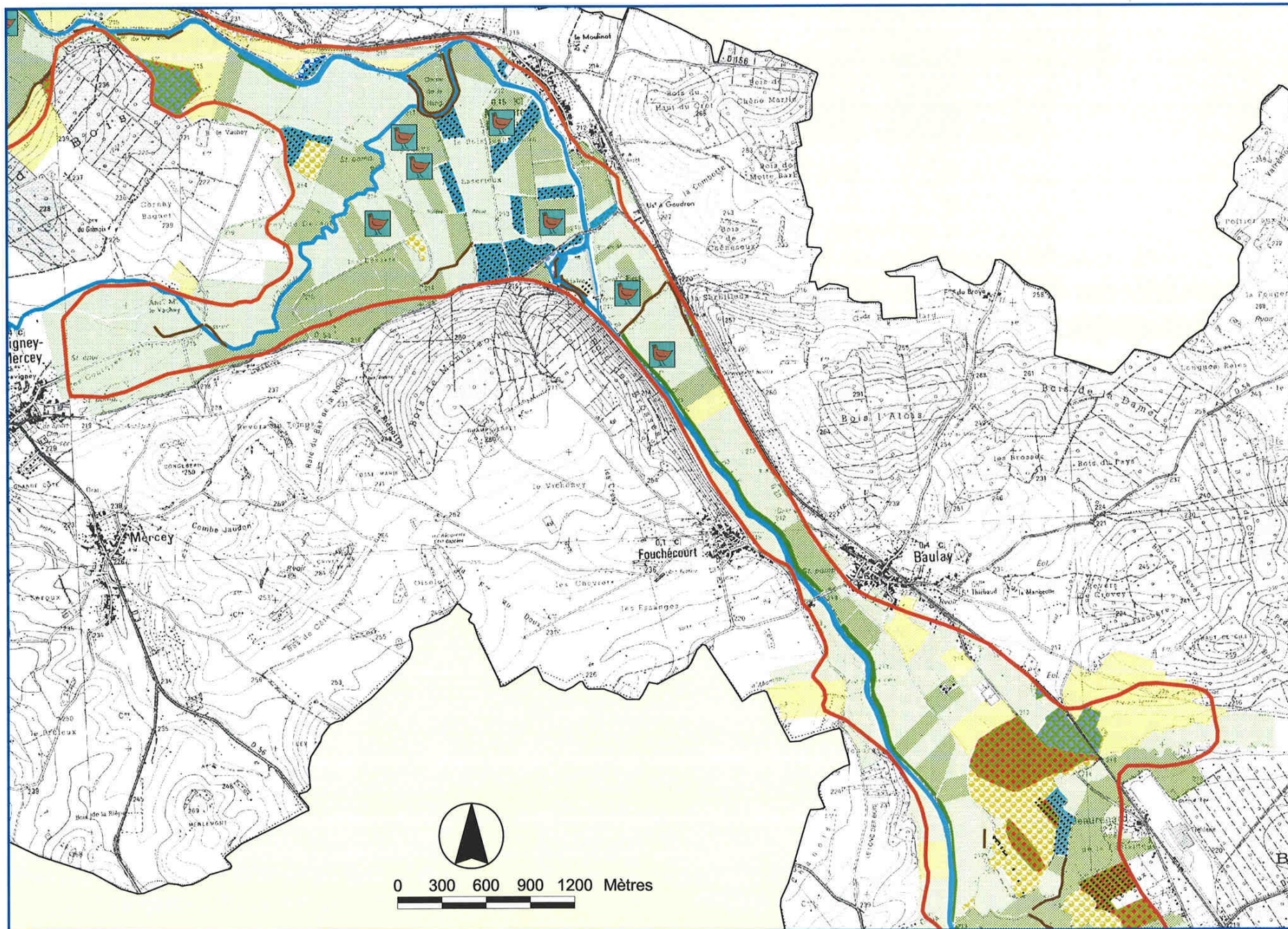
Zone 1 : Jonvelle - Ormoy



Zone 2 : Aisey - Montureux



Zone 3 : Fouchecourt

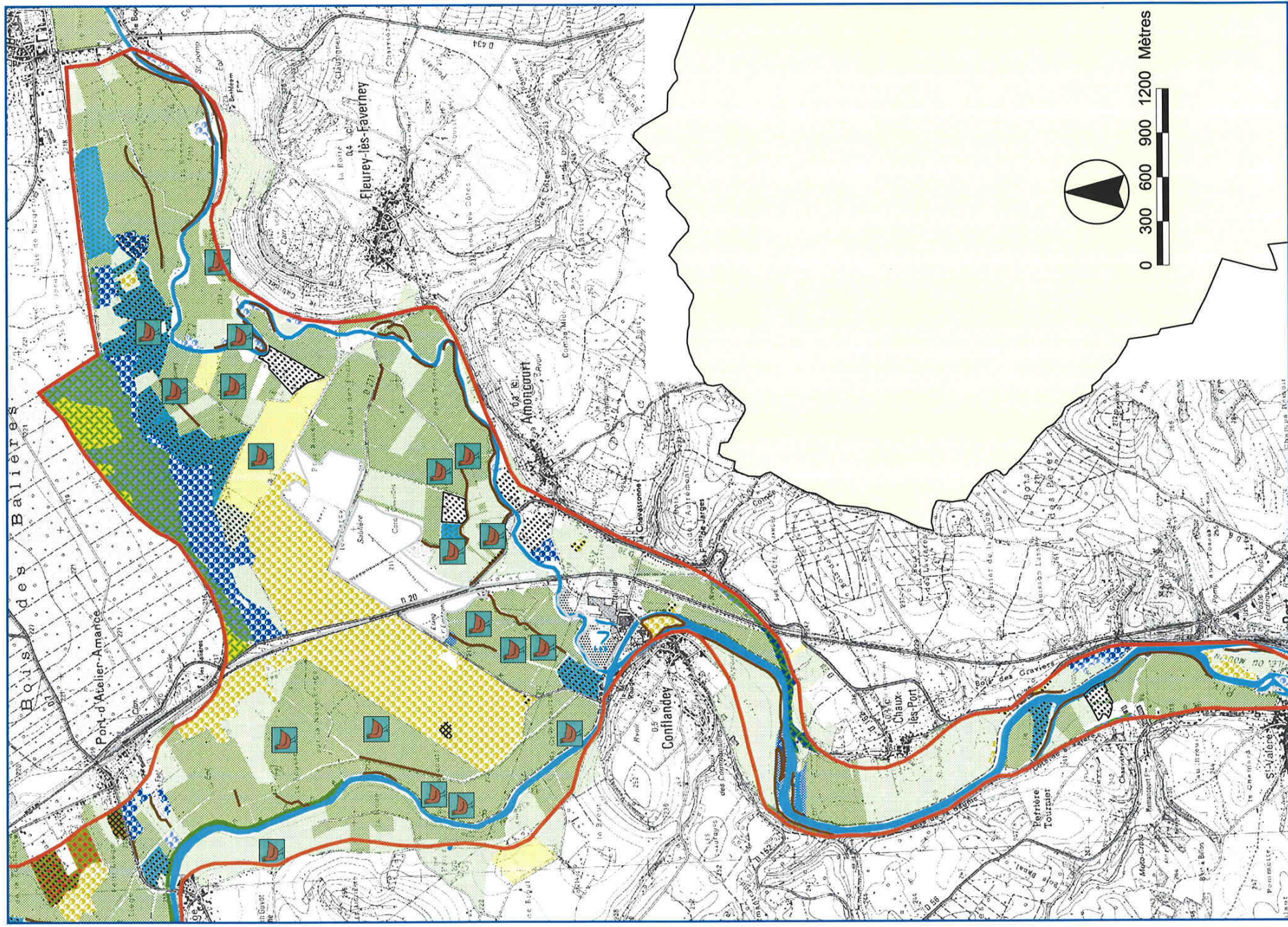


Sources : Orthophoto IGN, ONF, ENC

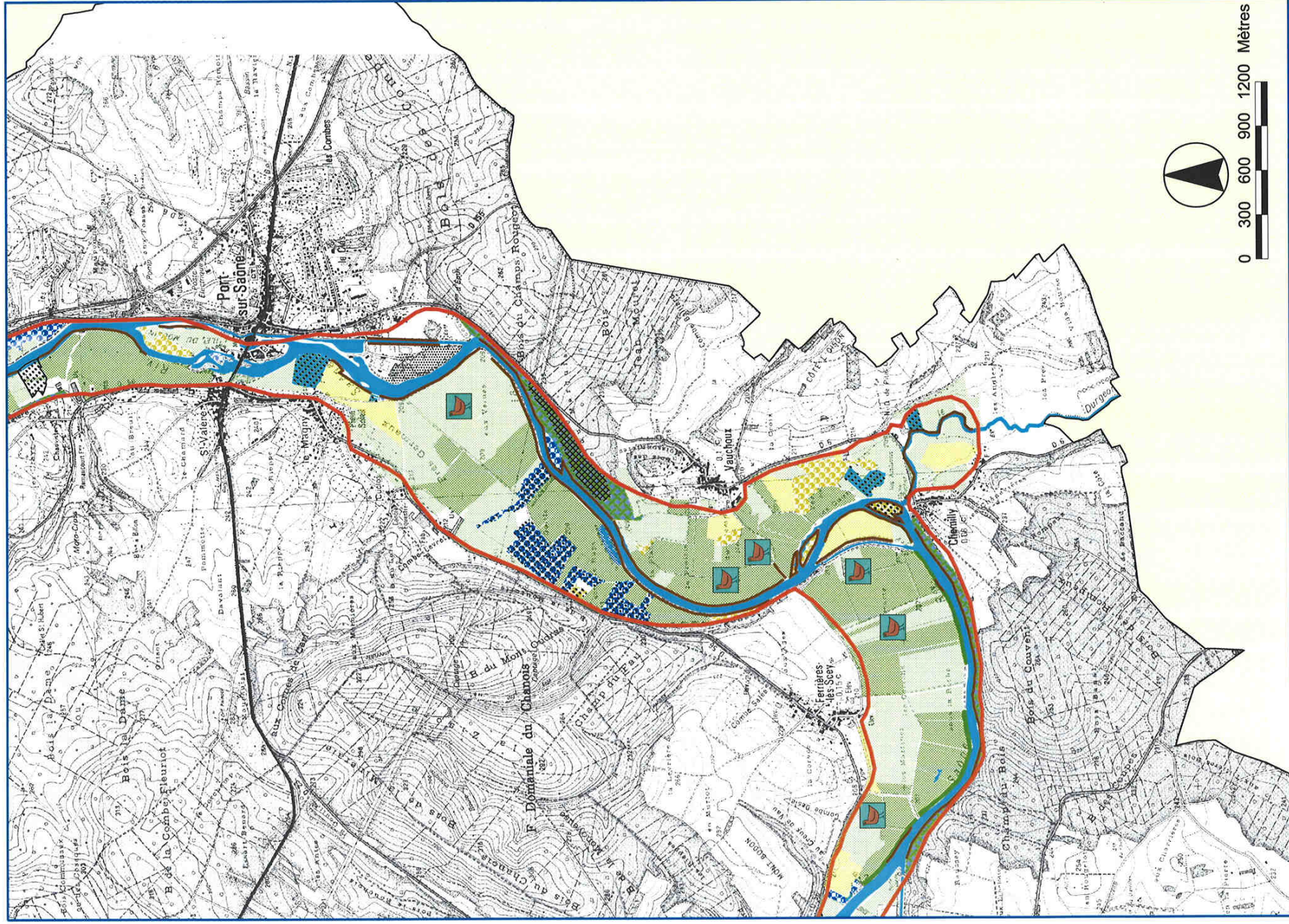


BD CARTO® & SCAN 258
©IGN 2000-2001

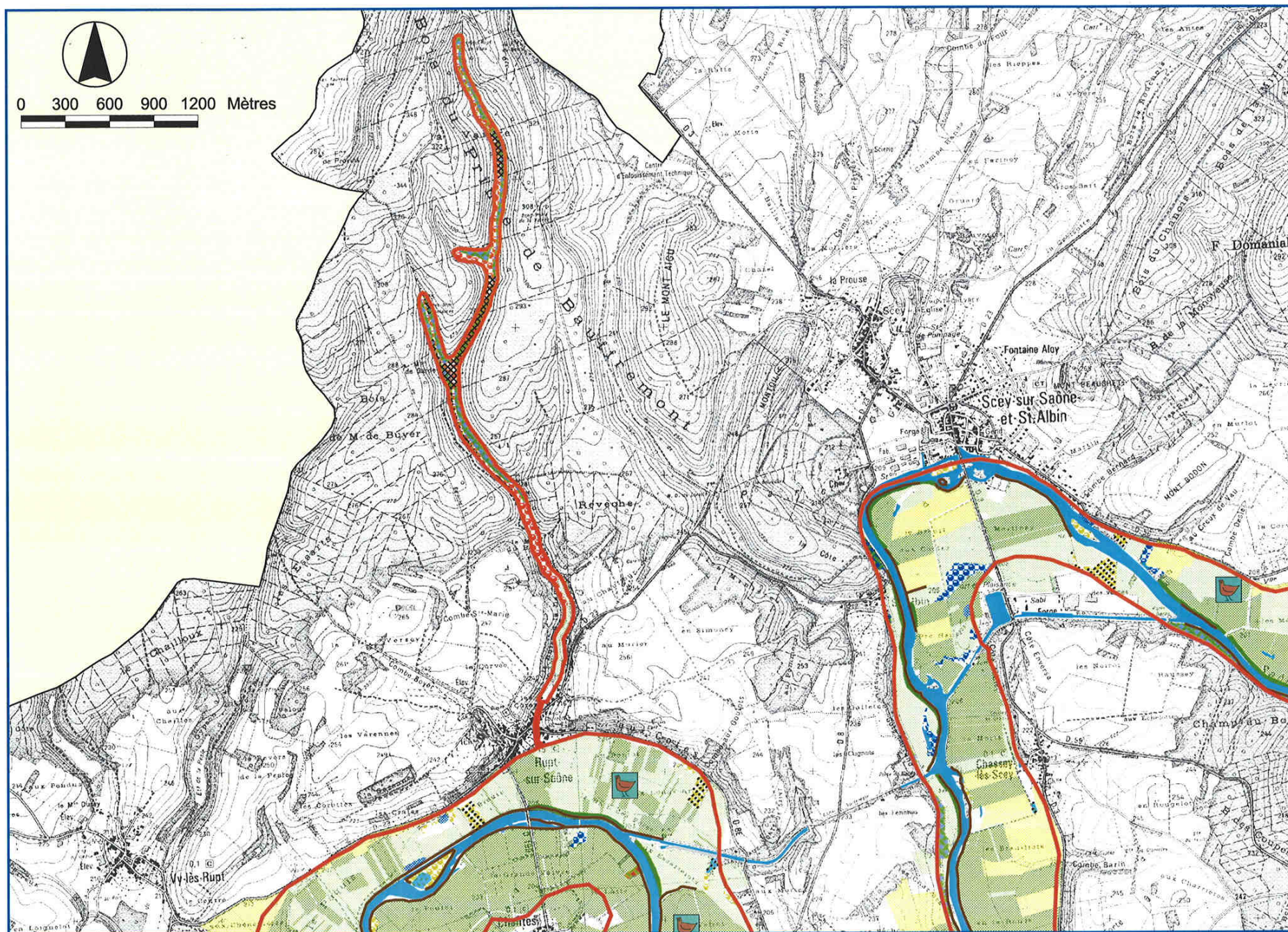
Zone 4 : Port d'Atelier - Port sur Saône



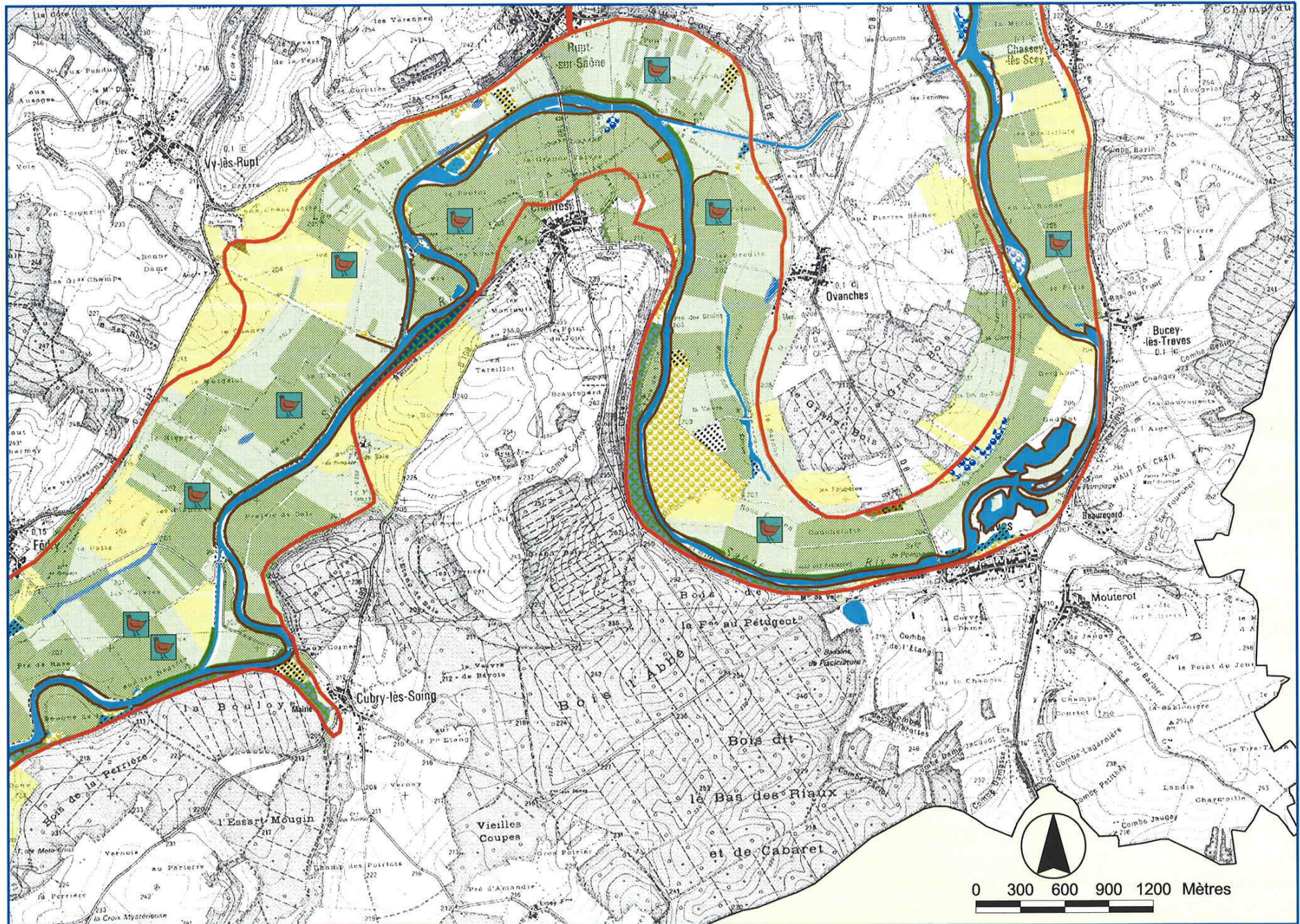
Zone 5 : Port sur Saône



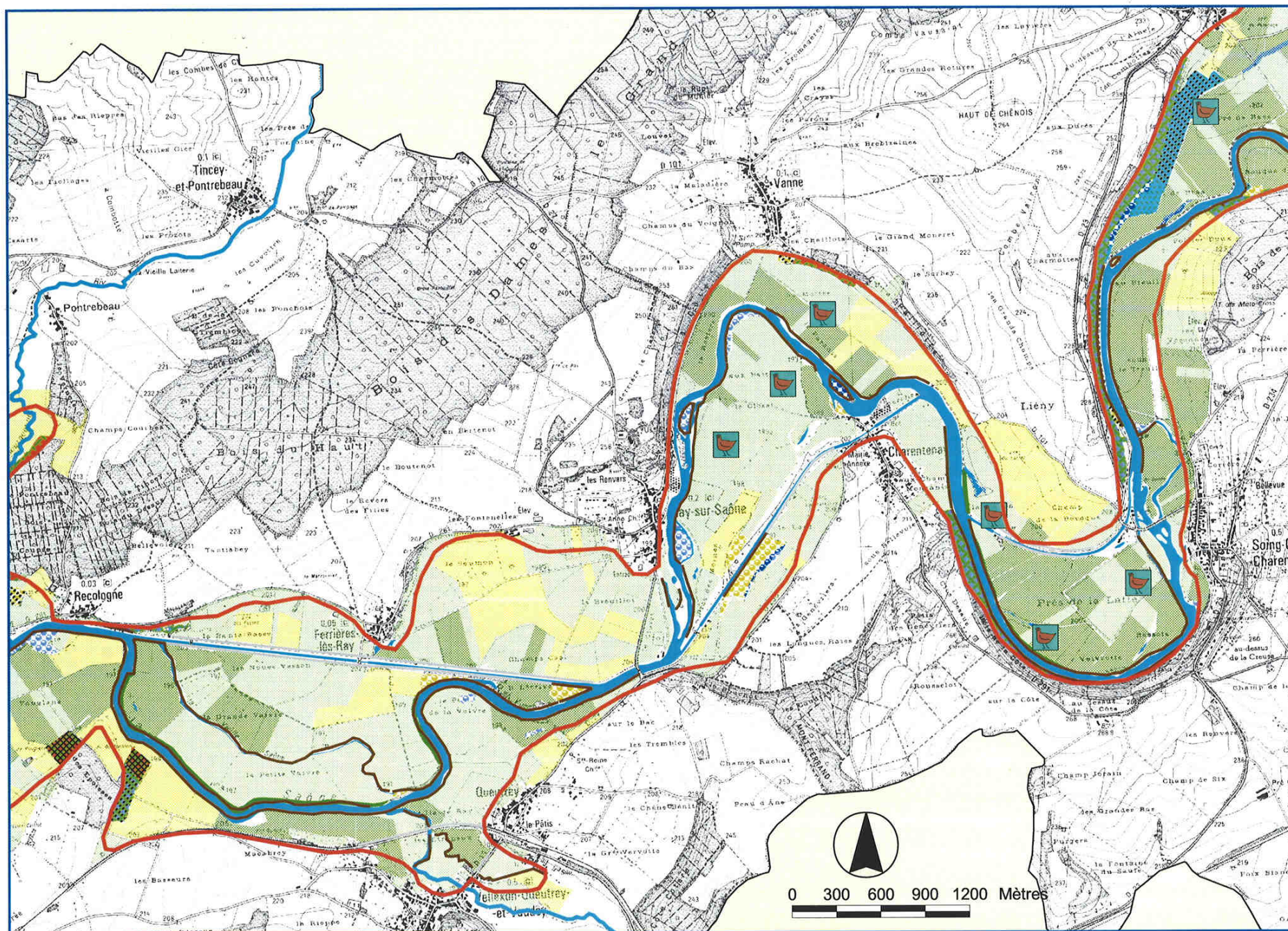
Zone 6 : Scey - Rupt



Zone 7 : Chassey - Fédry



Zone 8 : Vannes - Velleuxon

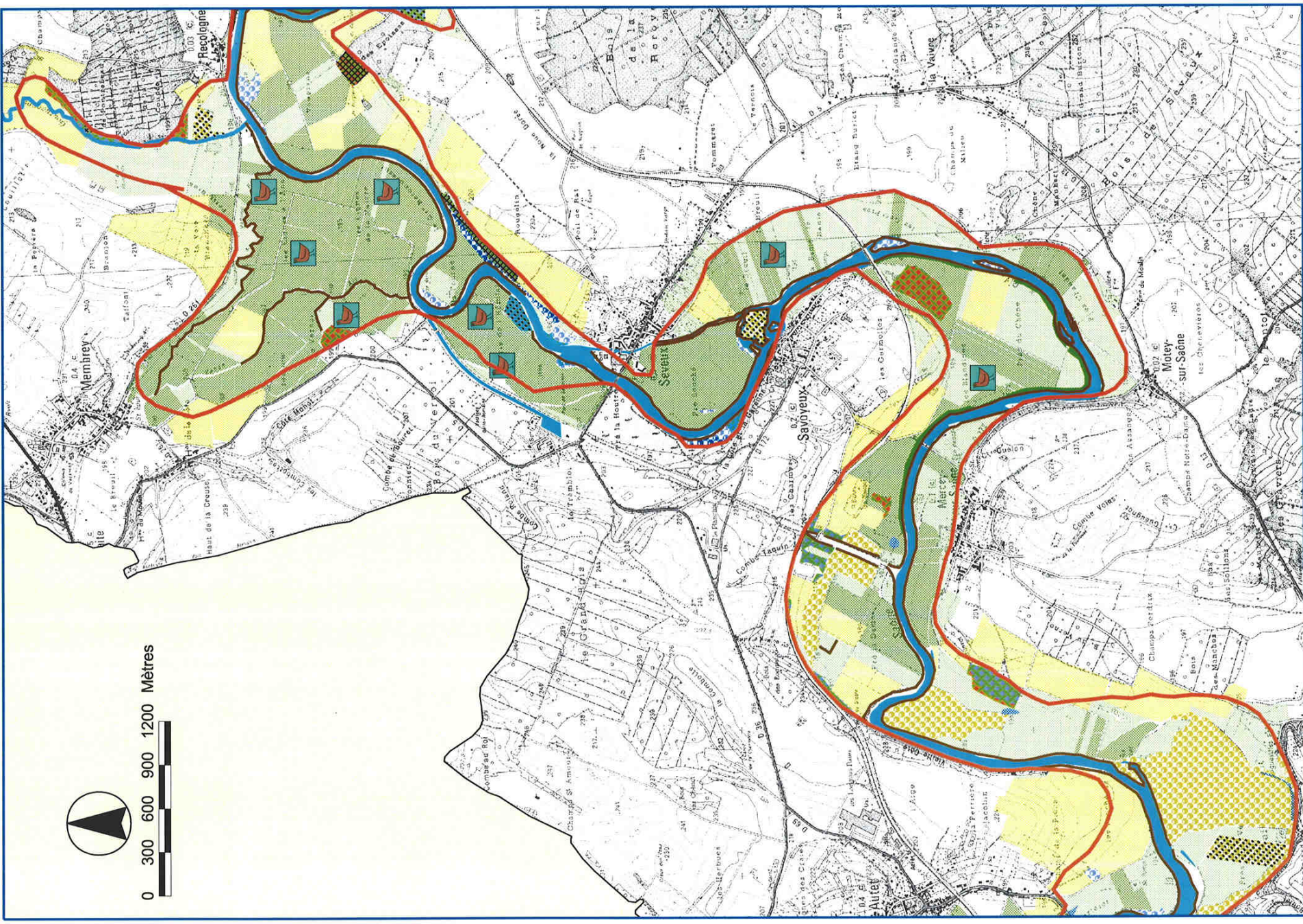


Sources : Orthophoto IGN, ONF, ENC

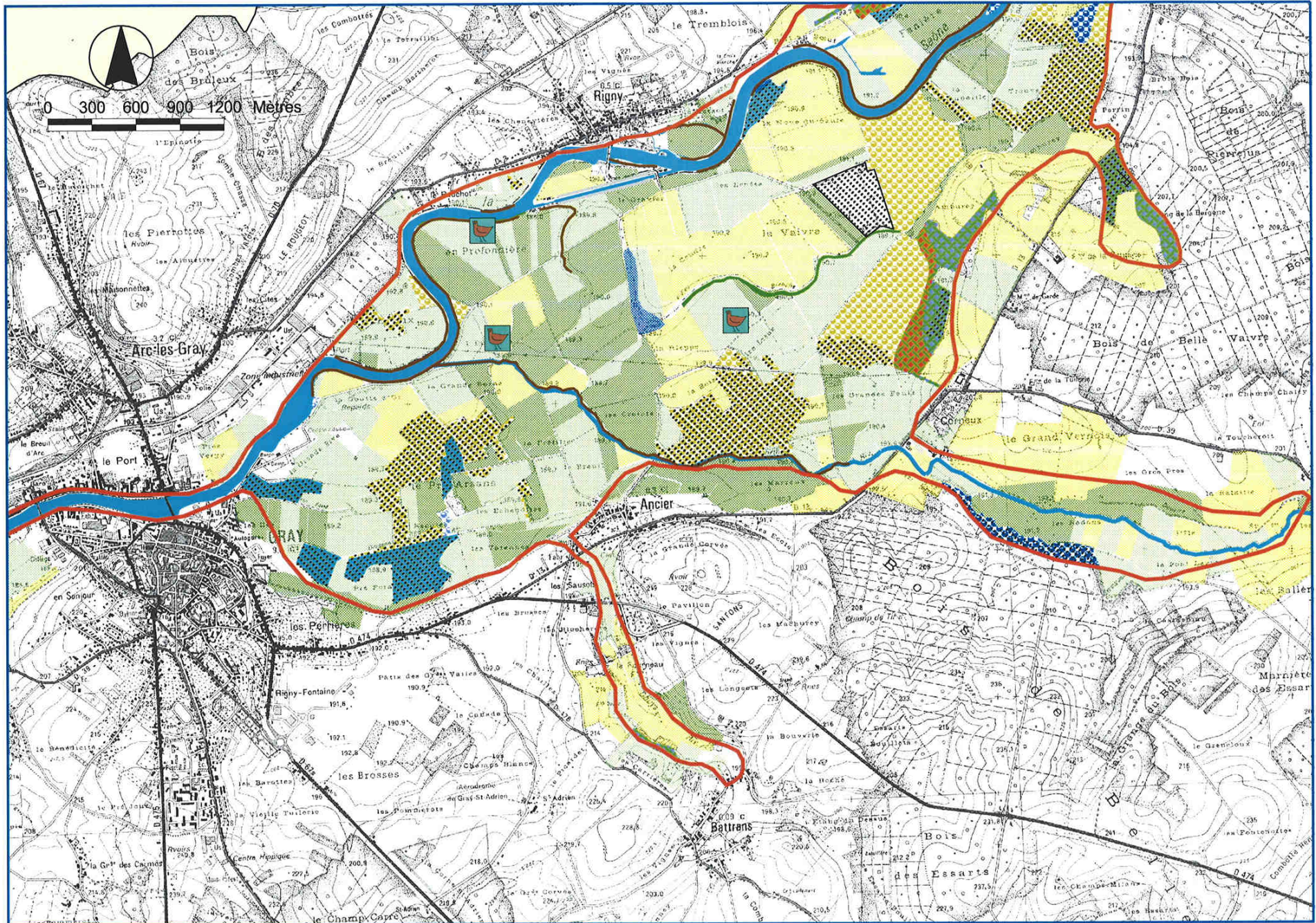


BD CARTO® & SCAN 250
©IGN 2000-2001

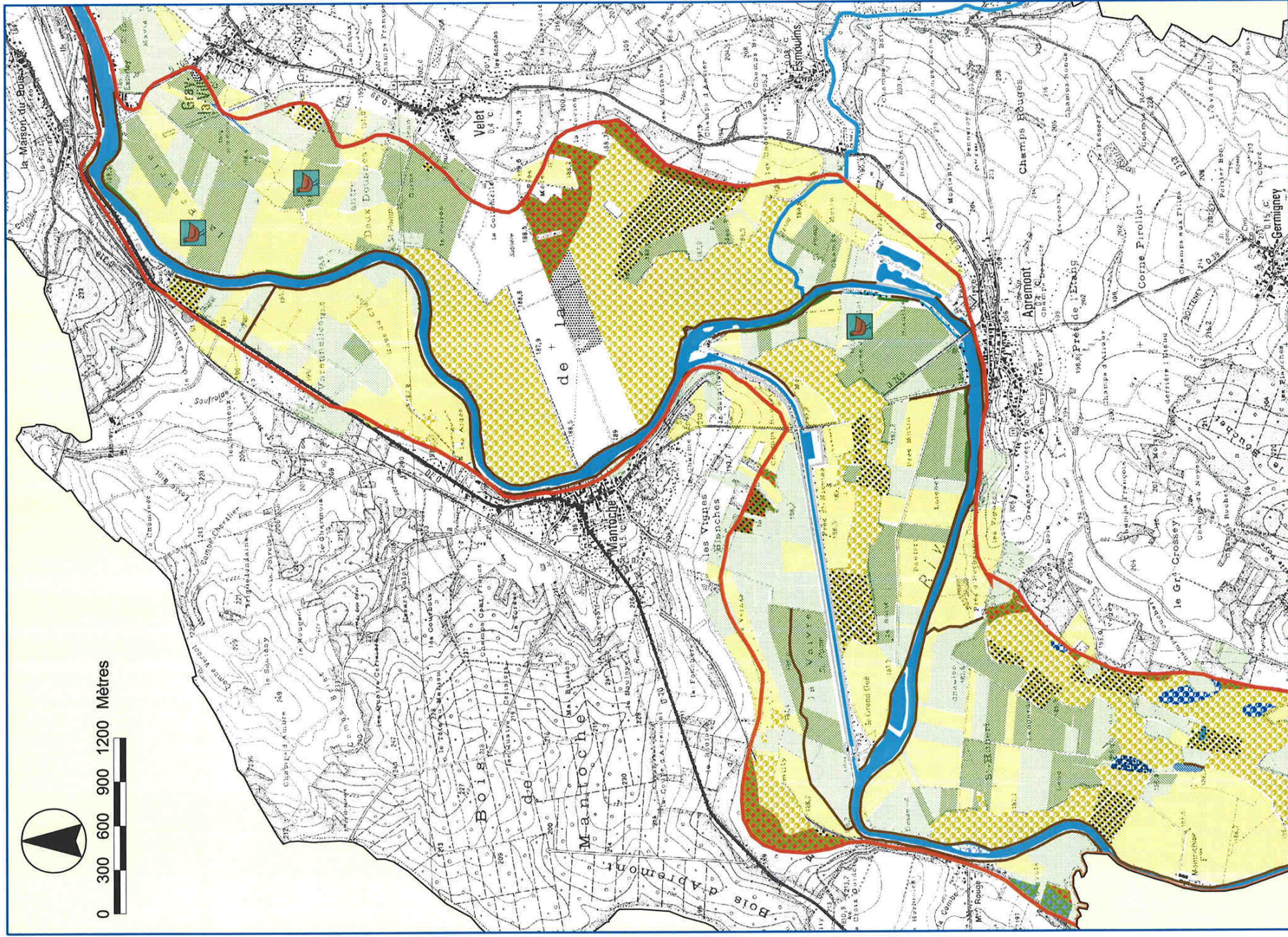
Zone 9 : Membrey - Autet



Zone 11 : Gray nord



Zone 12 : Gray sud



Zone 13 : Broye

